

OBSERVATIONS OF THE 2022 LOUISIANA VOTER ROLLS
BY JEFF O'DONNELL, ORDROS ANALYTICS
February 2nd, 2023

1. SUMMARY

An analysis of the late-2022 Louisiana Voter Registration files shows numerous serious issues, all of which give us reason to believe that the registration system is rife with errors and vulnerabilities which could, in the past or future, be used to facilitate voter fraud.

2. DEFINITIONS

- Voter Registration File/System. The Voter Registration system is the database used by the state of Louisiana to track all active and inactive voters. A Voter Registration File is the data file exported from the Voter Registration system, and it includes the name, address, registration number, registration date, age, and other information uniquely identifying a single voter.

- Voter History File. The Voter History file is a data file containing the registration number of a voter as well as the date of any election in which they voted. This file can be joined with the Voter Registration file to produce a list of all elections in which a specific voter has cast their vote.

- Active Voter. An active voter is a voter in the Voter Registration system that is considered in “good standing” and is eligible to cast a vote in upcoming elections.

- Inactive Voter. An inactive voter is a voter who has either moved from their county or state, is deceased, or who has been deemed inactive because they have not voted in an election for a proscribed period of time. In Louisiana, inactive voters can still vote in an election if they provide adequate identification and proof of residence.

- Phantom Voter. A phantom voter describes a voter in the Voter Registration system who is either not a real person, or a real person who has been used against their will and knowledge to cast a vote in an election.

3. REGISTRATION SOFTWARE NOT MEETING BEST PRACTICES

As will be shown below, “impossible” conditions, such as duplicate registrations and obviously incorrect birthdates are permitted to exist in the system. Modern “best practices” dictate that the software prevent the entry of any data which violates a set rule, and it is evident that the software used to maintain the Louisiana Registration System has not been designed or developed with adherence to these practices.

It is my recommendation that the Voter Registration System software be revised or replaced so that it meets modern data standards, and that the voters in the state be required to re-register with the new or properly revised system to eliminate the incorrect or perhaps fraudulent records it contains.

4. DUPLICATE REGISTRATION NUMBERS

There are **35,836** duplicate registrations in the voter file. In 33,220 of these cases, both voters have an active status. None of these appear to be the same individual. See accompanying spreadsheet “Louisiana-Duplicate Registrations” for all these records.

Over 28,000 of these duplicates occur in voters registered in St. Tammany Parish and Tangipahoa Parish.

This is concerning because 33,615 of these registration numbers voted in the November 2020 election and 29,147 of these registration numbers voted in the November 2022 election. It is impossible to determine which

of the voters with the identical registration numbers voted in these elections, making accurate auditing of the elections impossible. This deviation will affect some of the subsequent numbers given in this report.

5. ACTIVE VOTERS WHO HAVE NEVER VOTED, OR NOT SINCE 2012

There are **210,762** voters who are active, registered before 2012, but have not voted in any election since and including 2012. This represents over 7% of all active voters (2,845,285). If this metric is moved back to 2008, the number is 129,046. These “unlikely voters” are prime candidates for use in fraudulent phantom voter schemes, the likes of which have been observed and documented in other states. These records should be inactivated or deleted. Additionally, there are 303,923 active voters who have **never** voted. This represents more than 10% of all active voters. The combination of these voters is listed by parish in the spreadsheet “Louisiana_Never_Voted_Or_Since_2012”. This gives us reason to believe that these voters are no longer qualified or have changed residence, yet remain available as inventory to phantom voter schemes.

6. MISSING VOTER HISTORY RECORDS

There are a great many missing voter history records. For instance, less than 6,000 records exist for a voter who voted in the 1980 general election. Anyone 62 or older should have been able to vote in that election. Another way of stating it is that according to the voter history file, there are less than 6,000 of the approximately 1.5 million Louisianans who voted in 1980 who are still alive and living in Louisiana. This is extremely unlikely to be true.

7. EXTREMELY OLD ACTIVE VOTERS

There are 166 active voters who are 110-141 years old, including some who, according to the Voter History files, voted in the November 2020 and November 2022 election. This leads us to believe that either the ages

listed in the Voter Registration system are incorrect, or these inactive or deceased voters have been reactivated for nefarious reasons, such as use in phantom voter schemes. A List of these voters can be found in the “Louisiana_Ancient_Active_2022_Voters” spreadsheet.

8. VOTERS CASTING MULTIPLE VOTES

82 voters have been identified through cursory search as being very likely the same person registered twice. Of those 82 voters, 55 have both registrations Active, 40 possibly voted twice in the November 2020 election, and 28 possibly voted twice in the November 2022 election.

Although these are small numbers, they should be precisely zero, and indicate a problem in the registration/election system which may actually have much greater scope. A list of the 82 duplicates can be found in the spreadsheet “Louisiana_Clones”.

9. RECENT VOTERS NOW INACTIVE

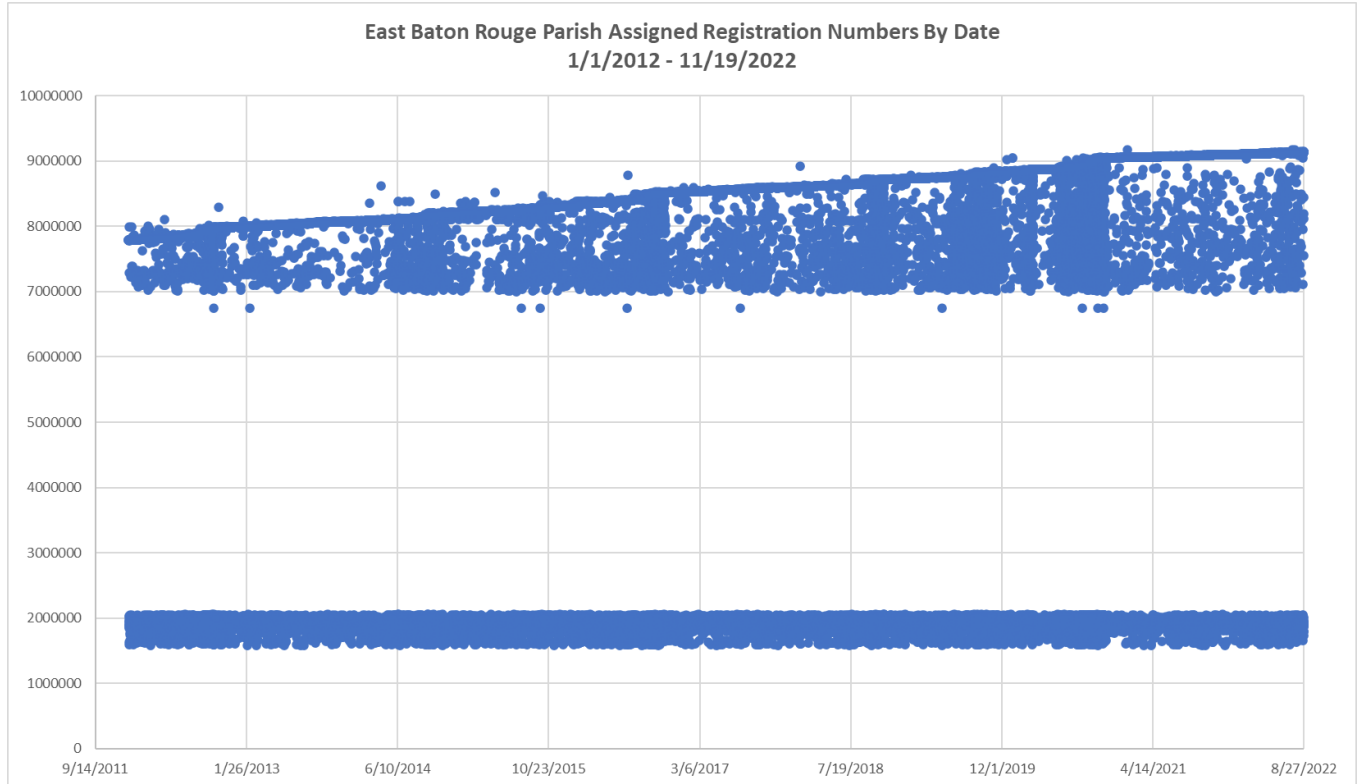
3,624 November 2022 voters in the history file are not listed as Active in the voter file. Their records are listed in the spreadsheet “Louisiana_Inactive_2022” spreadsheet.

59,962 November 2020 voters in the history file are now listed as Inactive. Both of these numbers should be cross-checked with the state voter purge lists, as their size gives us reason to believe that these voters have had their voter status improperly altered.

10. INCONSISTENT REGISTRATION NUMBERS

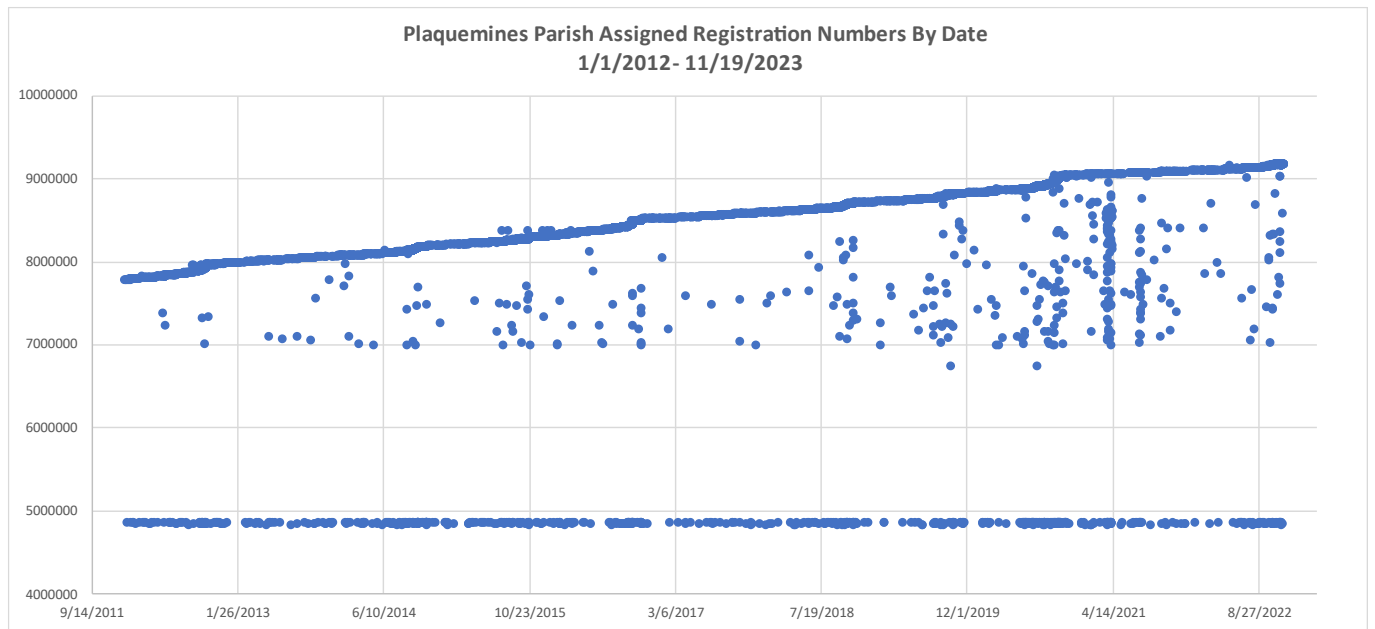
A thorough analysis of the assignment of voter registration numbers shows that the numbers are not being assigned sequentially at the parish or state level. Instead, their assignment suggests the use of an algorithm or formula, where voters are being assigned registration numbers in a

manner which is not straightforward and understandable. The following charts demonstrate this finding.



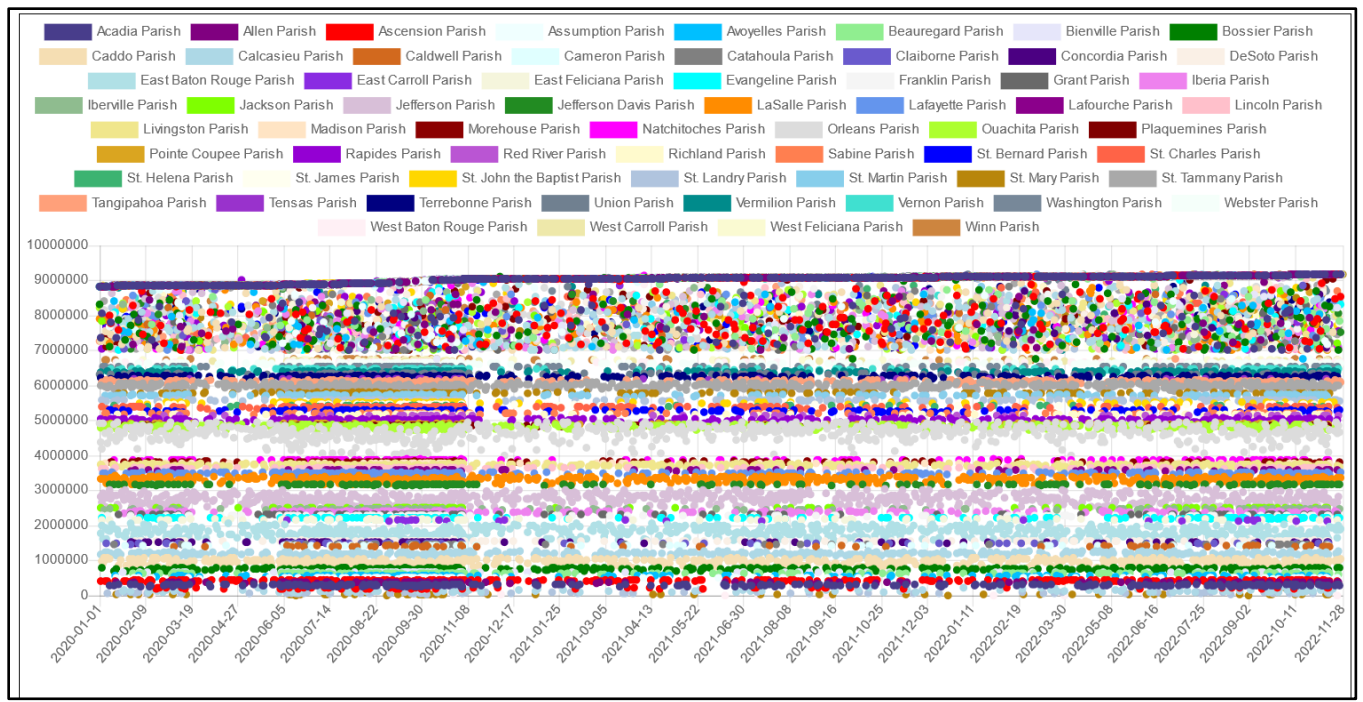
It can be seen that over the time period displayed, registration numbers in East Baton Rouge parish are assigned in two “bands” of numbers – from about 6,700,000 to about 9,100,000 and about 1,590,000 to about 2,010,000. While the top band shows that the highest number in use increases steadily, lower numbers throughout the band continue to be used in a seemingly random fashion. The lower band shows seemingly random selection throughout.

The following chart displays the same data, but for the much smaller Plaquemines parish.



It can be seen that Plaquemines parish also contains registration numbers in two bands. The top band is in the same range as was seen in East Baton Rouge. The bottom band is smaller, between about 4,850,000 and 4,860,000. Again, while the top band shows a regular increase in the highest number used, lower numbers continue to be used. The lower band also shows seemingly random assignments and skipped ranges of numbers can be seen throughout.

A similar evaluation of all 64 parishes showed that the pattern holds throughout – the parish has a range of numbers (a lower numbered range) which is unique to the parish, but also has registration numbers in the same “shared” upper range. When all parishes are shown together, the lower and upper banding is obvious. (Date range restricted to 1/1/2020 – 11/19/2023)



The area below about 7,000,000 are the 64 lower bands used by each parish. The area above 7,000,000 is the shared upper band, and the seemingly random assignment is obvious.

This deliberate obfuscation of registration number assignment destroys transparency and gives reason to believe that the state and its parishes are using the registration number assignment to specially classify voters into groups, the existence of which could be (and have been in other states) used to denote phantom voters. It also de-couples the sequence of registration number from the sequence of the dates of their entry. This can enable a rogue actor to backdate inserted registrations to give the appearance that newly inserted voter records have been in the system for some time.

This finding may explain why duplicate registration numbers exist in the voter registration file, as the registration system software, instead of simply assigning the next available number, needs to calculate them via a formula which may not adequately check to see if the number has been previously used. None of the duplicate registrations occur in the shared upper band, they are always observed in the lower bands which are used

exclusively for a particular parish.

The state of Louisiana and its parishes must publish the method by which new registrations numbers are assigned, and alter this method to provide transparency and enable effective auditing of the voter registration systems.

11. VOTERS WITH ADDRESSES OUTSIDE THE STATE/COUNTRY

12,085 active Louisiana voters have a mailing address outside of the state. 1,588 of these voters have a mailing address outside of the *country*. While some of these are perhaps active-duty military stationed abroad, some of the countries listed do not have an American military presence. 5,015 of these out of country voters voted in November 2020, while 1,216 voted in the November 2022 election. These voters and the breakdown by country can be found in the spreadsheet “Louisiana_Out_Of_State_Voters”.

NOTE:

The Parish IDs listed on the spreadsheets refer to the following parishes:

Parish ID	Parish Name
1	Acadia Parish
2	Allen Parish
3	Ascension Parish
4	Assumption Parish
5	Avoyelles Parish
6	Beauregard Parish
7	Bienville Parish
8	Bossier Parish
9	Caddo Parish
10	Calcasieu Parish
11	Caldwell Parish
12	Cameron Parish
13	Catahoula Parish
14	Claiborne Parish
15	Concordia Parish
16	DeSoto Parish

- 17 East Baton Rouge Parish
- 18 East Carroll Parish
- 19 East Feliciana Parish
- 20 Evangeline Parish
- 21 Franklin Parish
- 22 Grant Parish
- 23 Iberia Parish
- 24 Iberville Parish
- 25 Jackson Parish
- 26 Jefferson Parish
- 27 Jefferson Davis Parish
- 28 LaSalle Parish
- 29 Lafayette Parish
- 30 Lafourche Parish
- 31 Lincoln Parish
- 32 Livingston Parish
- 33 Madison Parish
- 34 Morehouse Parish
- 35 Natchitoches Parish
- 36 Orleans Parish
- 37 Ouachita Parish
- 38 Plaquemines Parish
- 39 Pointe Coupee Parish
- 40 Rapides Parish
- 41 Red River Parish
- 42 Richland Parish
- 43 Sabine Parish
- 44 St. Bernard Parish
- 45 St. Charles Parish
- 46 St. Helena Parish
- 47 St. James Parish
- 48 St. John the Baptist Parish
- 49 St. Landry Parish
- 50 St. Martin Parish
- 51 St. Mary Parish
- 52 St. Tammany Parish
- 53 Tangipahoa Parish
- 54 Tensas Parish
- 55 Terrebonne Parish
- 56 Union Parish
- 57 Vermilion Parish
- 58 Vernon Parish
- 59 Washington Parish
- 60 Webster Parish
- 61 West Baton Rouge Parish
- 62 West Carroll Parish
- 63 West Feliciana Parish
- 64 Winn Parish

APPENDIX 1 - PARISH BREAKDOWNS

PARISH	ACTIVE	INACTIVE	TOTAL	% REP	% DEM	% OTHER
Acadia Parish	37,378	2,001	39,379	41.4	34.7	23.9
Allen Parish	11,969	1,478	13,447	39.4	37.4	23.2
Ascension Parish	79,597	4,188	83,785	39.4	32.8	27.8
Assumption Parish	13,961	751	14,712	28.1	51.5	20.4
Avoyelles Parish	22,729	1,304	24,033	31.2	45.2	23.5
Beauregard Parish	22,316	952	23,268	47.4	22.7	29.9
Bienville Parish	8,702	193	8,895	32.9	48.0	19.1
Bossier Parish	68,680	7,305	75,985	46.8	25.6	27.5
Caddo Parish	146,644	11,493	158,137	28.3	46.6	25.1
Calcasieu Parish	115,363	11,798	127,161	37.1	34.2	28.6
Caldwell Parish	5,892	333	6,225	47.7	28.6	23.7
Cameron Parish	4,542	485	5,027	45.6	27.8	26.6
Catahoula Parish	6,335	115	6,450	38.3	40.2	21.5
Claiborne Parish	8,500	401	8,901	34.7	42.2	23.1
Concordia Parish	11,743	778	12,521	33.8	44.3	21.9
DeSoto Parish	18,704	352	19,056	37.2	40.2	22.6
East Baton Rouge Parish	276,301	16,231	292,532	27.5	46.7	25.8
East Carroll Parish	4,689	199	4,888	16.4	65.2	18.3
East Feliciana Parish	13,463	528	13,991	34.0	43.8	22.2
Evangeline Parish	20,780	1,013	21,793	34.7	44.7	20.6
Franklin Parish	12,987	513	13,500	41.8	37.7	20.5
Grant Parish	12,587	399	12,986	48.3	24.2	27.5
Iberia Parish	43,080	3,166	46,246	36.1	37.8	26.1
Iberville Parish	20,423	920	21,343	21.6	58.4	20.0
Jackson Parish	9,437	360	9,797	42.7	36.0	21.3
Jefferson Davis Parish	19,945	1,097	21,042	39.4	32.8	27.7
Jefferson Parish	258,851	17,035	275,886	31.6	38.0	30.4
Lafayette Parish	55,030	4,783	59,813	41.8	30.8	27.4
Lafourche Parish	8,628	218	8,846	55.1	22.6	22.3
LaSalle Parish	153,538	6,953	160,491	40.3	31.0	28.7
Lincoln Parish	25,061	2,033	27,094	37.9	36.4	25.7
Livingston Parish	83,542	3,208	86,750	50.9	20.0	29.0
Madison Parish	7,184	293	7,477	20.9	56.9	22.2
Morehouse Parish	16,493	1,145	17,638	31.4	46.5	22.2
Natchitoches Parish	22,420	1,559	23,979	30.9	43.7	25.4
Orleans Parish	253,237	15,742	268,979	9.7	64.2	26.1
Ouachita Parish	98,250	5,897	104,147	38.1	36.5	25.4
Plaquemines Parish	13,772	671	14,443	36.9	36.0	27.1
Pointe Coupee Parish	14,570	952	15,522	28.1	50.1	21.8
Rapides Parish	78,179	3,405	81,584	37.8	35.9	26.3
Red River Parish	5,578	159	5,737	32.0	48.9	19.1
Richland Parish	13,600	482	14,082	38.9	37.4	23.6

Sabine Parish	13,850	917	14,767	45.9	30.5	23.6
St. Bernard Parish	25,617	1,238	26,855	26.4	39.5	34.2
St. Charles Parish	34,317	1,916	36,233	38.2	35.0	26.9
St. Helena Parish	8,281	201	8,482	22.5	60.2	17.4
St. James Parish	14,741	592	15,333	21.9	61.5	16.6
St. John the Baptist Parish	27,925	1,556	29,481	16.3	60.3	23.4
St. Landry Parish	53,687	4,882	58,569	28.2	49.4	22.4
St. Martin Parish	34,377	2,661	37,038	35.7	40.2	24.1
St. Mary Parish	29,385	2,737	32,122	33.5	38.4	28.1
St. Tammany Parish	178,264	11,150	189,414	47.2	22.4	30.4
Tangipahoa Parish	73,610	5,983	79,593	37.4	34.6	28.0
Tensas Parish	3,440	26	3,466	24.5	59.7	15.8
Terrebonne Parish	58,415	4,809	63,224	41.8	28.5	29.7
Union Parish	15,039	658	15,697	45.1	32.2	22.7
Vermilion Parish	36,673	1,453	38,126	39.8	33.3	26.9
Vernon Parish	23,588	2,037	25,625	44.5	25.3	30.2
Washington Parish	27,593	762	28,355	35.2	40.2	24.6
Webster Parish	22,349	1,629	23,978	38.2	37.7	24.1
West Baton Rouge Parish	16,817	949	17,766	29.0	47.0	24.0
West Carroll Parish	6,974	157	7,131	48.9	27.2	23.9
West Feliciana Parish	7,393	450	7,843	39.1	37.9	23.0
Winn Parish	8,270	274	8,544	37.2	36.3	26.6
	2,845,285	179,925	3,025,210			